

TAX REPORTING SUITE

TRSuite

VERSION 20.11



USERS'S MANUAL

Published: Nov 2020

For the latest information and to leave feedback, please visit Vogele IT-Services at <http://www.section11.ch>.

The information in this document and any document referenced herein is provided for informational purposes only, is provided AS IS AND WITH ALL FAULTS and cannot be understood as substituting for customized service and information that might be developed by VogeLe IT-Services for a particular user based upon that user's particular environment. RELIANCE UPON THIS DOCUMENT AND ANY DOCUMENT REFERENCED HEREIN IS AT THE USER'S OWN RISK.

© 2020 VogeLe IT-Dienstleistungen. All rights reserved.

Information in this document, including URL and other Internet Web site references, is subject to change without notice. Unless otherwise noted, the example companies, organizations, products, domain names, e-mail addresses, logos, people, places and events depicted herein are fictitious, and no association with any real company, organization, product, domain name, e-mail address, logo, person, place or event is intended or should be inferred.

VOGELE IT-SERVICES PROVIDES NO WARRANTIES, EXPRESS, IMPLIED OR STATUTORY, AS TO THE INFORMATION CONTAINED IN THIS DOCUMENT AND ANY DOCUMENT REFERENCED HEREIN. VogeLe IT-Services provides no warranty and makes no representation that the information provided in this document or any document referenced herein is suitable or appropriate for any situation, and VogeLe IT-Services cannot be held liable for any claim or damage of any kind that users of this document or any document referenced herein may suffer. Your retention of and/or use of this document and/or any document referenced herein constitutes your acceptance of these terms and conditions. If you do not accept these terms and conditions, VogeLe IT-Services does not provide you with any right to use any part of this document or any document referenced herein.

Complying with the applicable copyright laws is the responsibility of the user. Without limiting the rights under copyright, no part of this document may be reproduced, stored in or introduced into a retrieval system, or transmitted in any form or by any means (electronic, mechanical, photocopying, recording or otherwise), or for any purpose, without the express written permission of VogeLe IT-Services.

The names of actual companies and products mentioned herein may be the trademarks of their respective owners.

Content

Revision History	4
Installation	5
Download.....	5
Installation Windows	6
1 st time Installation (Windows)	6
Update existing installation (Windows)	8
Enter a license key	8
The Main Window.....	10
TRSuite: Main Menu	11
Common UI Objects.....	11
Invalid Fields	11
CLEAR Buttons	11
POP-OVER Buttons.....	11
CLEAR Lists	12
Data Validation	12
File Information	12
Notifications.....	12
Work Item.....	13
Masterdata	14
Default Values.....	15
Proxy Configuration	15
Saving, Loading, Saving as	16
Update Notification	16
Log File Viewer.....	17

Revision History

Product Version	Doc Version	Revision Date	Description
1612	Rev 0	15.12.2016	Initial Revision
1703	Rev 1	07.03.2017	CRS Module Release
1706	Rev 2	15.06.2017	CRS / AT / FATCA Update Release Update Web-Site (trsuite.ch) Legacy installer not available any more Mac OS X installation
1712	Rev 3	01.01.2018	Work Item introduced
1803	Rev 4	21.03.2018	Additional CRS Country-Modules, fixes
1807	Rev 5	31.7.2018	Additional CRS Country-Modules, fixes, passwords saved encrypted in config files
1812	Rev 6	17.12.2018	FATCA and CRS improvements, additional country validators
1902	Rev 7	11.02.2019	FATCA & CRS improvements, support for FI & CK
1911	Rev 8	7.11.2019	CH FATCA Group Request, AT improvements, CRS improvements (AT, CH, CN)
20.01	Rev 9	20.01.2020	https://www.easycrs.ch/index.php/8-trsuite/13-trsuite-release-notes-version-20-02
20.02	Rev 10	24.02.2020	https://www.easycrs.ch/index.php/8-trsuite/13-trsuite-release-notes-version-20-02
20.03	Rev 11	25.03.2020	https://www.easycrs.ch/index.php/8-trsuite/15-trsuite-release-notes-version-20-03
20.05	Rev 12	02.06.2020	https://www.easycrs.ch/index.php/8-trsuite/16-trsuite-release-notes-version-20-05
20.11	Rev 13	24.11.2020	https://www.easycrs.ch/index.php/8-trsuite/17-trsuite-release-notes-version-20-11

The screenshots throughout the USER's MANUAL are produced on Windows 10 using the Windows Look and Feel.

In addition to this Users Guide, the following online resources may be useful:

- The home of the TRSuite: <https://www.trsuite.ch>

Installation

Download

TRSuite installers are available on our website: <https://trsuite.ch/downloads.html>. Latest download information is communicated with the update notification or release notes. In case the information is not available, please contact support@section11.ch.

Product	Version	Format/Size/MD5	Resources	Download
TRSuite 64bit Windows-Installer	19.11.0.0 (05-1012019) JRE 8u201	EXE, ~116 MD5: 3b531f11e79d6d2084f995c3c4d142f5	Release Notes Templates und Samples	DOWNLOAD
TRSuite, Early Access 64bit Windows-Installer	19.09.0.5 (22-10-2019) JRE 8u201	MSI, ~116 MD5: eea68dfcd516b5e3c7cad4635ef287c7	Release Notes Templates und Samples	DOWNLOAD
TRSuite, 64bit Windows-Installer	19.02.0.7 JRE 8u151	MD5: [Redacted]	Documentation	DOWNLOAD
TRSuite, 32bit Windows-Installer	19.02.0.7 JRE 8u151	MD5: 0c45edce7e93d9ee1a75cd5cb45c9a6c		DOWNLOAD
TRSuite, 32bit legacy Windows-Installer	19.02.0.7 JRE 8u45	EXE, ~95MB MD5: 41132753c50a6ddf70a6158fd3f376	Release Notes Documentation	DOWNLOAD
Release Date: Mar 4, 2019 Legacy Systems like Windows XP or Windows Server 2003 require a special version of the installer.				
Be aware that this version comes with an outdated and therefore vulnerable Java Virtual Machine.				
FATCA Excel Template	1902	ZIP, ~600KB MD5: e54b2e367ceab054a12dea4b5662aa7a		DOWNLOAD
CRS Excel Templates	1902	ZIP, ~450KB MD5: [Redacted]	Documentation	DOWNLOAD
CRS 100'000 records Excel Sample	1902	MD5: [Redacted]		DOWNLOAD
Hong Kong Excel Templates	1902	ZIP, ~165KB MD5: 73e675d1cdd3c5fff81894be2823605e		DOWNLOAD
Macao Excel Templates	1801	ZIP, ~165KB MD5: 45572db857a191af22a1771b48c306dd		DOWNLOAD
Release Date: Feb 12, 2019				
Documentation	1902	PDF		
Module CRS	Download		Module specific doumentation (pdf)	
Module IDES	Download			
Module FATCA	Download			
Module GMSG/AT	Download			
Module Malaysia Module	Download			
Module CH SEI Module	Download			
Module Hong Kong Module	Download			
Module Macao Module	Download			
Module Luxembourg Module	Download			

Legacy Systems like Windows XP or Windows Server 2003 require a special version of the installer, as those systems are not supported by the latest JRE. Be aware that this version comes with an outdated and therefore vulnerable Java Virtual Machine.

If you require such a version please contact support@section11.ch.

The User's Manual is divided into different parts, one for the main program describing the installation and common elements. One other per module. Please read the User's Guides thoroughly before you install the latest update to be informed about the news and changes

Verify md5 checksum after downloading the software. The md5 code is published on the download page.



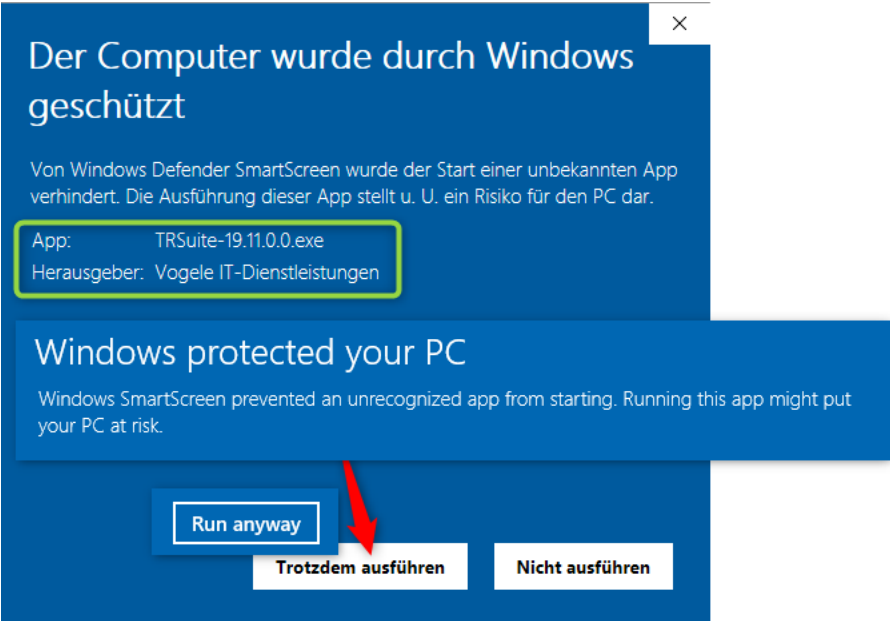
Once downloaded, proceed with installing TRSuite.

Installation Windows

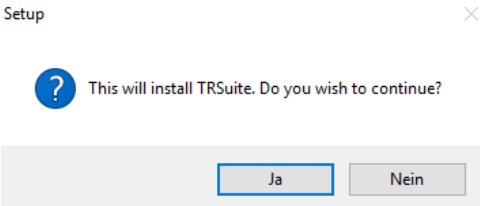
1st time Installation (Windows)

To install TRSuite, execute the downloaded installer and follow the instructions in the screens. If your IT environment has specific requirements regarding the installer (e.g. msi) please contact support@section11.ch.

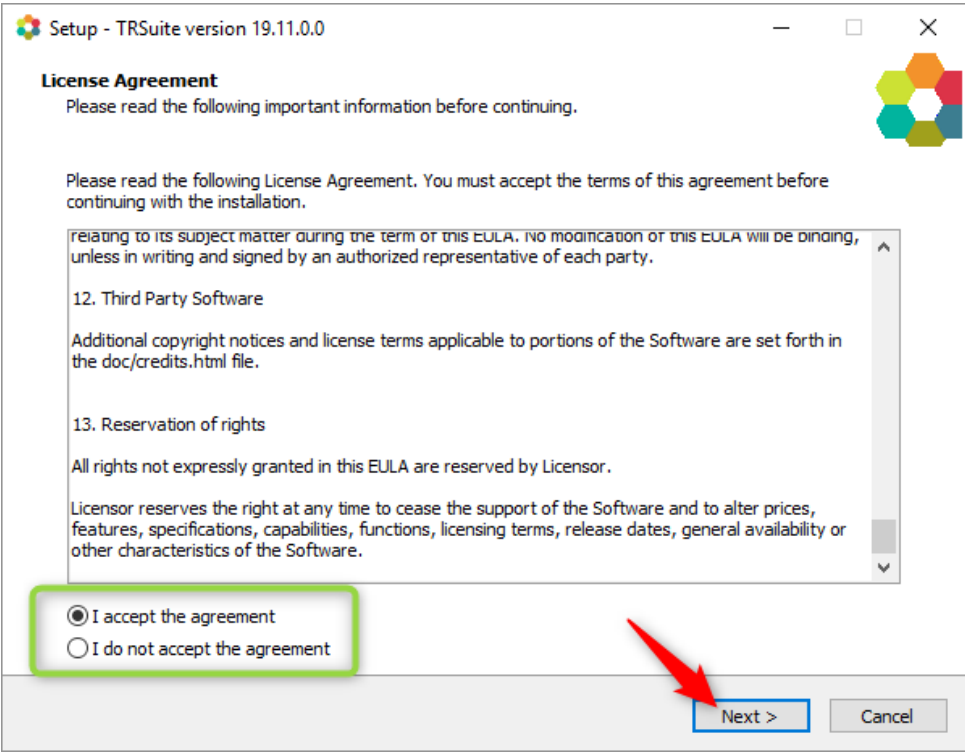
Note on Windows 10: When users download and run the installer, it could pop up with this message, even if our installer is signed with a digital code certificate. You can see in the image that the installer is signed, but it is still being flagged as dangerous.



Confirm the installation



Accept the license agreement and click next to start the installation process.



Select the destination folder

Select Destination Location

Where should TRSuite be installed?

Setup will install TRSuite into the following folder.

To continue, click Next. If you would like to select a different folder, click Browse.

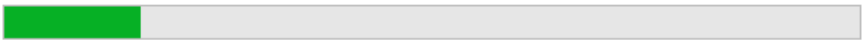
C:\Users\user\AppData\Local\TRSuite Browse...

The installer will perform a user level installation (no admin permissions required). In addition, a shortcut will be created (menu or desktop) and the TRSuite work item file extension (.trwi) is registered. Double clicking a trwi file will start the application and load the data.

Installing

Please wait while Setup installs TRSuite on your computer.

Extracting files...
C:\Users\user\AppData\Local\TRSuite\app\libs\poi-ooxml-schemas-3.17.jar



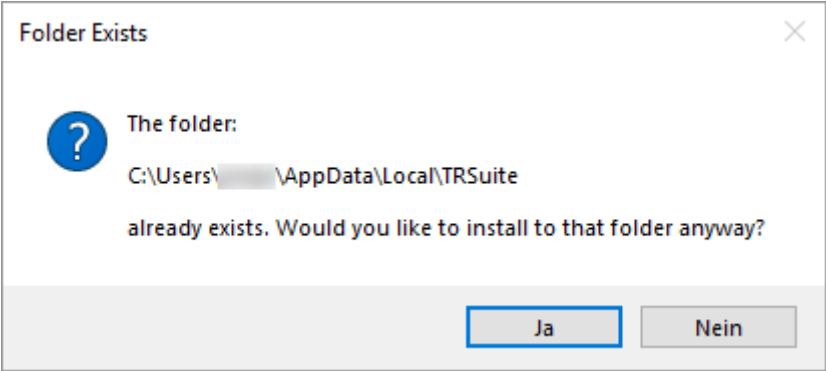
This installer will copy the bundle by default to %LOCALAPPDATA%/TRSUIITE. This can be changed, by selecting a different location.

After the installation, has finished, the installer will start the application and the main window is shown.

The Setup program accepts optional command line parameters. These can be useful to system administrators, and to other programs calling the Setup program. For more detailed information, please visit <https://www.easycrs.ch/index.php/8-trsuite/11-setup-command-line-parameters>

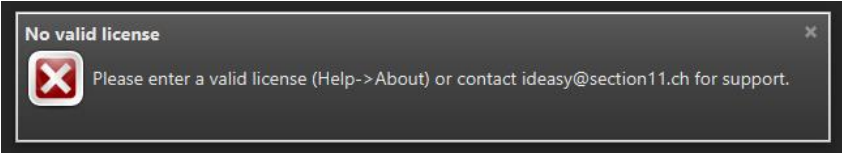
Update existing installation (Windows)

Just run the installer as described above, there is no need to uninstall any old version. The installer will replace the existing installation but keep all saved configurations and the license key.



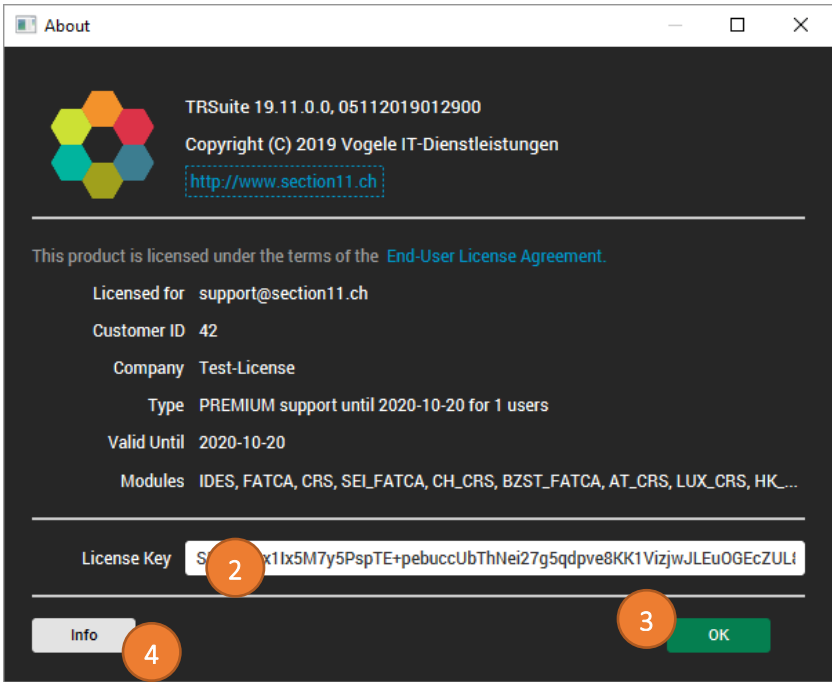
Enter a license key

After the 1st start the product requires a valid license key to be entered.

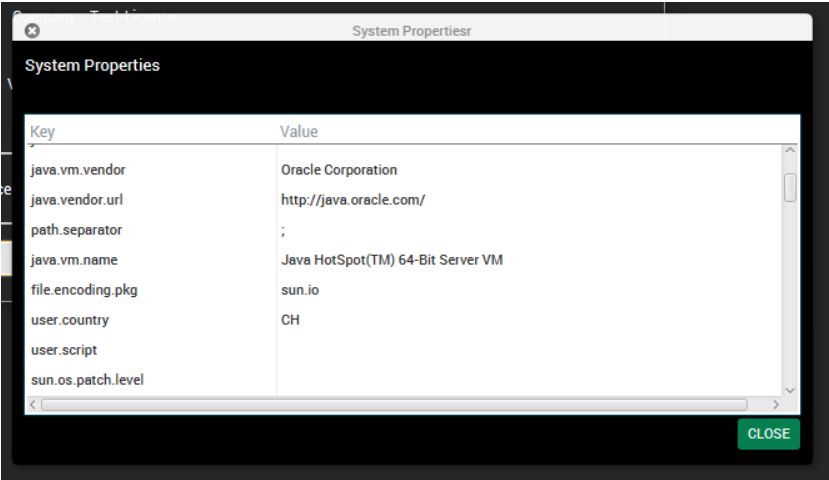


You receive a valid key via email after ordering the product or requesting a test version. Enter the "About"-Menu (1) and open the About-Dialog to enter (2) and apply (3) the license key. After closing the dialog TRSuite is ready to use.





(4) Info opens a dialog showing a set of system properties. In case of a support case, our team could ask for the information.



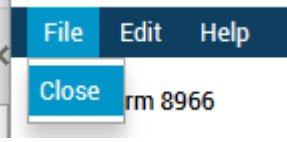
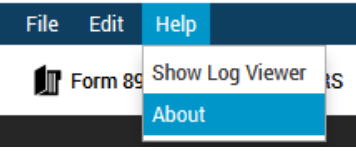
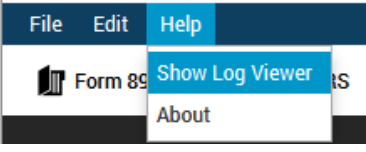
The Main Window

The Main window is the launch point for the entire application. You can select the licensed module in the modules button bar and perform the module specific tasks within main area of the module.

Each module comes with its own module menu and detail area.

The screenshot shows a software window with a menu bar (File, Edit, Help) and a toolbar containing icons for Form 8966, CRS, IDES, SEI, BzSt, and Masterdata. Below the toolbar is a 'Modules Button Bar' with a hamburger menu icon and the text 'IDES Packaging'. A secondary menu bar contains buttons for 'Create Transmission Archive', 'Extract IRS Response', 'Extract Archives', and 'IDES Configuration'. The main area is divided into two sections: 'IDES information' and 'SFTP'. The 'IDES information' section includes fields for GIIN, Path to Public Key, Path to Private Key, Password Private Key, Path to IRS Public Key, Path to HCTA Public Key, HCTA GIIN, and Working Directory. The 'SFTP' section includes fields for SFTP-Server, User, Password, Upload-Directory, and Download-Directory, along with a 'Proxy Required' checkbox and a 'Check Configuration' button. At the bottom of the SFTP section are buttons for 'Load ...', 'Save as ...', 'Save', and 'Reset'. On the right side, there is a 'Module Menu' with a 'STATUS' section showing file information: FILE: TR-idesConfig.xml, SAVED: 16:12:16 11:10, and PATH: C:\Apps\TRSuite\TRSuite\app\TR-i... Below this is a 'Status' area. Callout boxes provide the following descriptions:

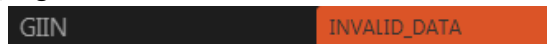
- Modules Button Bar** – shows all available modules of the software.
- Menu options** – points to the secondary menu bar.
- Module Menu** – module specific menu options.
- Module Main Area** – the main working area of a module, where all module specific tasks can be executed.
- Module Details Area** – includes general information and details for the selected module.

Menu Options	Description
Close	 <p>The Close menu item will close the running instance of TRSuite. Any unsaved changes will be lost.</p>
About	 <p>The About menu item opens the About dialog. The dialog enables the user to view, enter or update the license key.</p>
Show LogViewer	 <p>The “Show LogViewer” menu item opens the experimental log file viewer dialog. It enables the user to view the current application log file.</p>

Common UI Objects

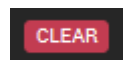
Invalid Fields

Some text fields expect specific values or formatted text, e.g. GIIN- or date-fields. If an invalid value/format is entered the text fields is marked red:



CLEAR Buttons

A CLEAR-button resets the values of all elements in the according logical region.



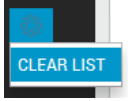
POP-OVER Buttons

If a button is colored with a blue background, more data is available. The black background indicates an empty data set.



CLEAR Lists

Table views like the Pool or Account Holder List have a separate menu to clear their content. By pressing the CLEAR LIST menu item all elements from the table are removed.



Data Validation

Entered data is continuously validated. If the data is not complete (all mandatory fields filled) or in a wrong format the warning symbol is displayed next to the affected section label.

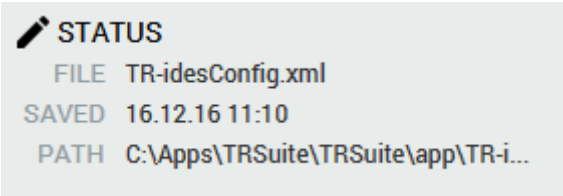


If the section is complete and correct, the green checkbox symbol is shown next to the label.



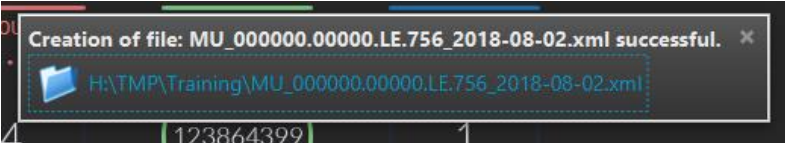
File Information

After a file is loaded or saved, the information about the file (name, last modified, absolute path) is displayed in the status pane of the detail area. The full path can be seen in the tooltip.

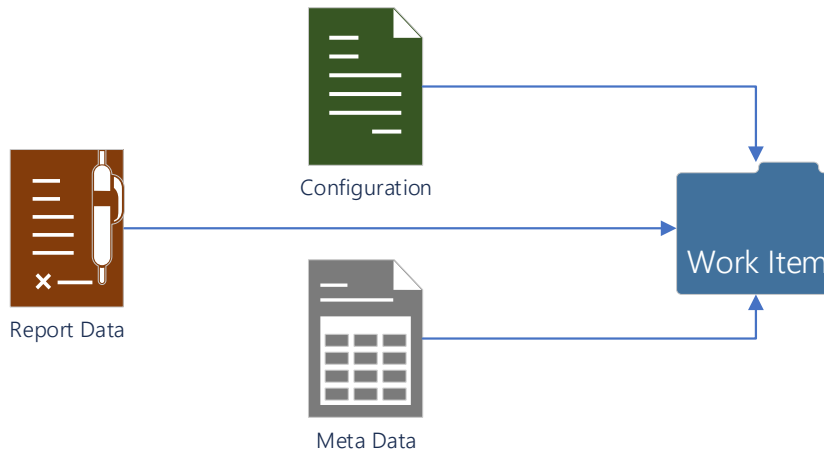


Notifications

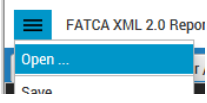
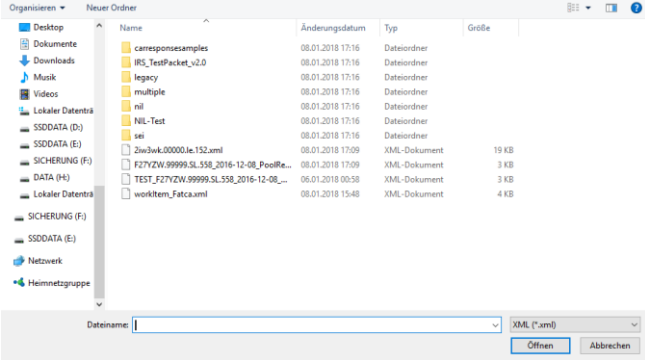
After a file is saved, it is possible to open the generated file (or folder) from within the application. Clicking the link opens the file/folder with the default application of the windows system, e.g. explorer to see the content of a folder.

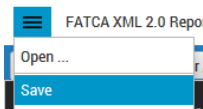
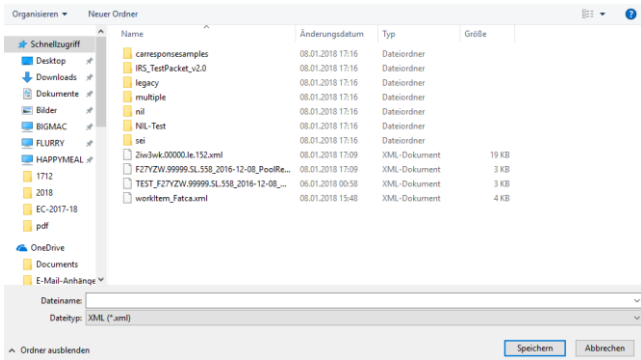
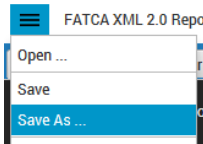


This is a major change, throughout all modules. In the past it was not possible to save and load incomplete FATCA or CRS reports. With the new “work item” you can now save and reload your work at any time and state.



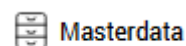
The work item does not only store your report data, but also the current configuration and required metadata. The following menu options are available for all TRSuite modules. You can save a document at any point as you work on it, and it's very good practice to save every few minutes. That way, if your computer crashes before you've finished your composition, you won't lose what you've typed.

Menu Options	Description
Open ...	<p>Once you've saved a document, you may want to access it again to make changes or correct it out. From the menu, choose “Open ...”</p>  <p>An 'Open' dialogue box will pop up. From this, find your way to the folder in which your document is saved. Folders are shown down the left-hand side of the dialogue box.</p> <p>Once you've located your document and clicked on it to select it, its name will be shown in the 'File name' box at the bottom of the dialogue box.</p>  <p>Click Open, the document will then be opened.</p>

Save	<p>From the menu, choose “Save” to save the current work.</p>  <p>A ‘Save’ dialogue box will come up, if pressed the first time. At the top and at the left-hand side in the list of folder options, it will show the folder where you’ll be saving the document. If you wish to change this folder, navigate through the folders on the left-hand side of the dialogue box to choose the one where you want to save your document.</p>  <p>Type a name for your document in the ‘File name’ box. Come up with a name that is concise but will allow you to find the document easily again.</p> <p>Once you have typed in the name of your document, click Save</p> <p>Your document will now have a name, which will be shown at the right file info screen. If you make changes to your document and then save them after it has been saved originally, the dialogue box will not come up again. It will just save your changes without any visual notification being shown.</p>
Save As ...	 <p>The ‘Save As’ menu is used to save an existing document under another name. This is helpful if you’ve made changes to your document and then want to save the changes, but also keep the original document in its original format and under its original name.</p>

Masterdata

In the master data dialog, the user can specify default values for regularly used fields and required network configurations to access the internet-based services (IDES upload, IGOR Synchronizer, AT-CRS web services, etc.)



Default Values

Default Values

Country Code

Currency Code

Working Directory

- Default Currency ISO Code, used for FATCA schema 2.0 XML generation and CRS configuration
- Default Country ISO, used for FATCA schema 2.0 XML generation and CRS configuration
- The default working directory, where generated artifacts are stored.

Proxy Configuration

A proxy server generally sits on the gateway of a corporate network. When a client (computer) requests an object (web page, image, etc.) from an origin server (server hosted publicly on the Internet), a proxy server interrupts the communication. In such a case, the proxy needs to be configured within the masterdata configuration to enable SFTP-Up and –Downloads.

Proxy Settings

Connection Timeout [ms] Accept all Certificates

ReadTimeout [ms]

HTTP Proxy Host HTTP Proxy Port

Requires Authentication

To check, if your network settings require a proxy, press the “Test Connection”-Button without any configuration data entered. The software tries to open a connection to the given URL (e.g. <http://update.section11.ch>). In case of a failure the error message is displayed in the details area of the master data module:

Accept all Certificates

HTTP Proxy Port

FILE TR-masterdataConfig.xml
 SAVED 01.01.70 01:00
 PATH C:\Apps\TRSuite\TRSuite\...

Connection failed:
 http://update.section11.ch
 java.net.SocketTimeoutException:
 connect timed out

Now press the “Auto Detect” and the software tries to detect your proxy settings based on the operating system you are running. E.g. when your system uses a proxy automation script (PAC) Javascript it is used to determine the actual proxy.

Response: 200 OK

Once a proxy is detected, re-try the connection test. It should now give a

Some proxy servers request a login from the user before they will allow any connections. TRSuite has no support to handle this automatically. This needs to be done manually, because there is no way to read the login and password. Enter your user name and password into the displayed text fields.

<input checked="" type="checkbox"/> Requires Authentication	Username	<input type="text"/>
	Password	<input type="password"/>

And finally - Don't forget to save the changes by pressing the "Save" Button.

Saving, Loading, Saving as ...

The button bar provides the functionality to store and restore the master data configuration.

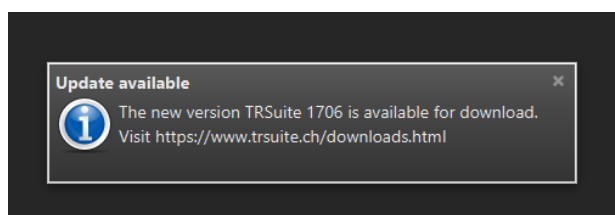


Menu Options	Description
Save	The Save method persists any configuration settings that have been modified since the configuration was saved last time. If a configuration file does not exist at the physical default location, a new configuration file will be created. Default path: <INSTALLATION-DIRECTORY>/app/ TR-masterdataConfig.xml
Save As ...	The Save As method persists any configuration settings that have been modified since the configuration was saved last time to the user selected path. If a configuration file does not exist at the physical default location, a new configuration file will be created.
Load ...	Load the configuration from an existing configuration file. Existing values will be replaced.
Reset	Discards all non-persist changes and loads the last known configuration.

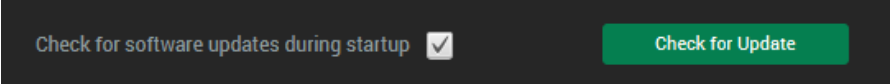
Update Notification

During startup, provided that the application can connect to the internet, a connection to <http://www.section11.ch/update/version2.json> is established to check, if a new version is available.

A notification is shown in case a new version is available for download.



The check can be de-/activated in the master data dialog by setting the following check box:

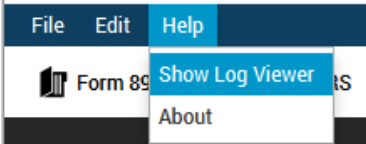


Default Value is: off

The check can be performed any time by pressing the “Check for Update” button.

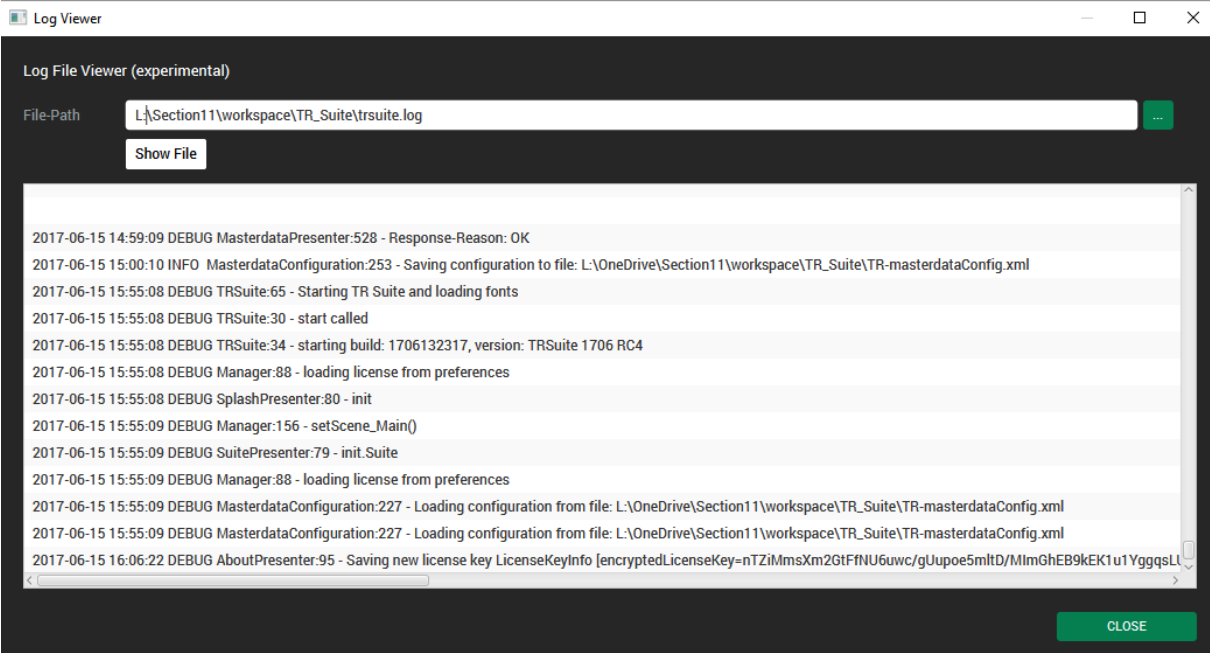
Log File Viewer

Log File Viewer in TRSuite is used to access information about errors and events that are captured in application log files. You can view the log files from a local installation.



To open the viewer, click the according item in the Help menu.

In the file path field, the current log file is shown. Click the “Show File” button to display the content of the log file.



The file is located at: <TRSUIE_INSTALLATION_ROOT>\app\trsuite.log

(typically: %USERPROFILE%\AppData\Local\TRSuite\app\)